



Chisel diamond tools

The chisel diamond tool is used for highest accurate dressing operations. Thoroughly selected diamonds, the right method of setting and special tooling machines guarantee the **STROH-quality**.

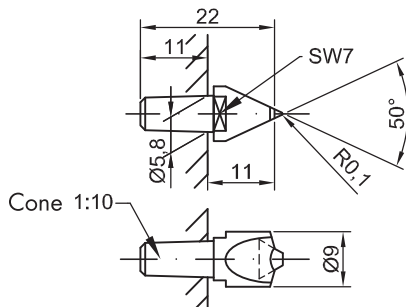
Order-no.

601

Jung RA 39

RA 38 - 53

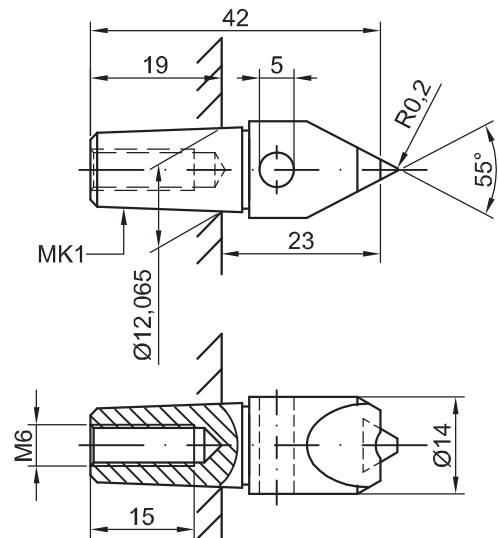
Cone 1:10



Order-no.

604

Fortuna



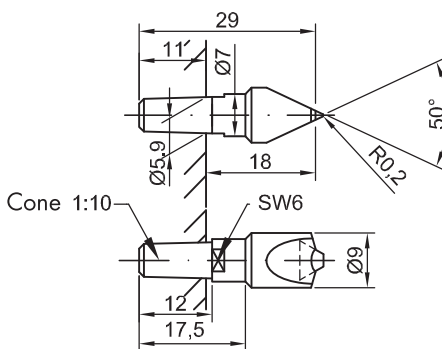
Order-no.

602

Jung

Fu 42 - 13 - 1

Cone 1:10

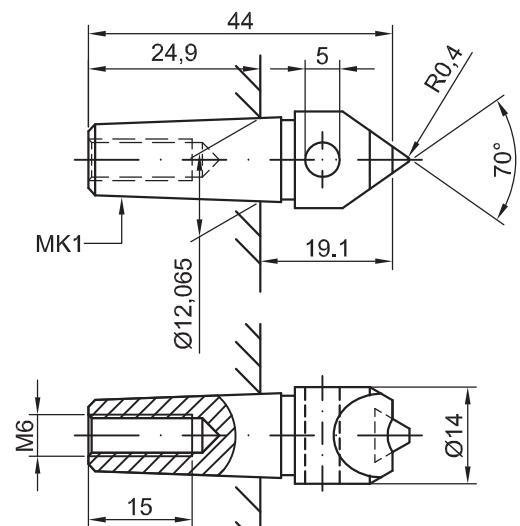


Order-no.

605

Schaudt

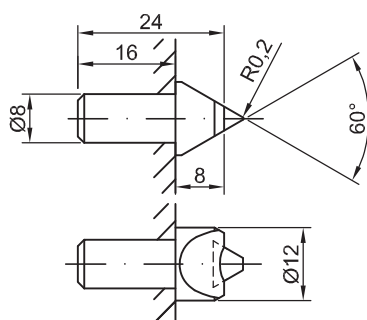
NT65



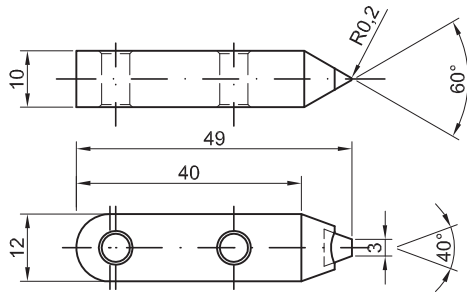
Order-no.

603

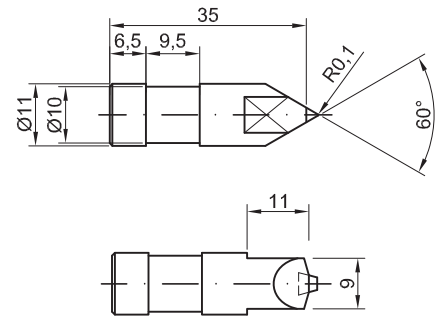
MSO



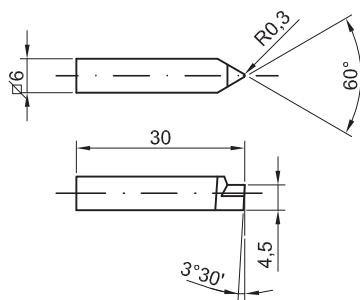
Order-no.
606
Schaudt



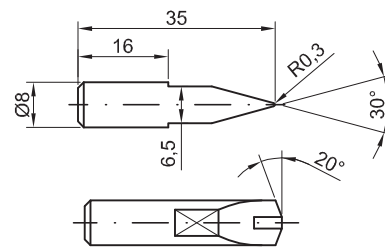
Order-no.
609



Order-no.
610
Lindner

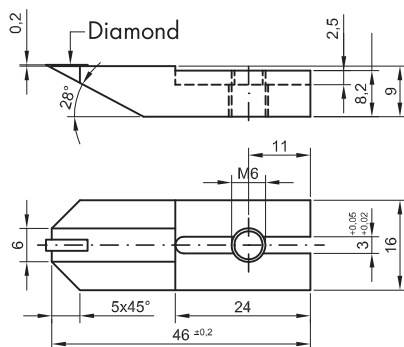


Order-no.
611
Jungner



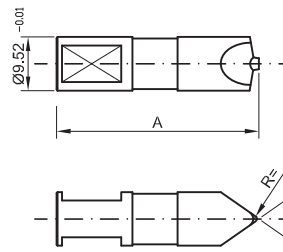
REISHAUER CHISEL DIAMONDS

Order-no.
613
NZA

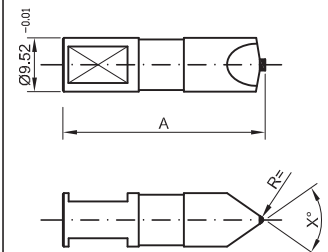


DIAFORM CHISEL DIAMONDS

Natural diamond



Synthetic diamond



Module	0,5-0,9
	1,0-4,0
	1,0-5,0
	1,0-8,0

Standard dimension see page 18
Special design possible



STANDARD DIMENSION FOR DIAFORM HOLDERS, ANGLES AND RADIUSSES

Type/Order-no.	Length (mm)	Angle (Degree)	Radius (mm)	Machine-Type
30/125 K	35	30	0,125	AT-ATR BT-BTR
30/250 K	35	30	0,250	
40/125 K	35	40	0,125	
40/250 K	35	40	0,250	
40/500 K	35	40	0,500	
60/125 K	35	60	0,125	
60/250 K	35	60	0,250	
60/500 K	35	60	0,500	
30/125 L	45	30	0,125	2A-2AR-2B-2BR 3A-3AR-3B-3BR 4A-4AR-4B-4BR 5/1-5/2-10/2 6/1-6/2-12/1-12/2 8/1-8/2-14/1-14/2
30/250 L	45	30	0,250	
40/125 L	45	40	0,125	
40/250 L	45	40	0,250	
40/500 L	45	40	0,500	
60/125 L	45	60	0,125	
60/250 L	45	60	0,250	
60/500 L	45	60	0,500	
30/125 EL	58	30	0,125	5/4-6/4 12/4-14/4
30/250 EL	58	30	0,250	
40/125 EL	58	40	0,125	
40/250 EL	58	40	0,250	
40/500 EL	58	40	0,500	
60/125 EL	58	60	0,125	
60/250 EL	58	60	0,250	
60/500 EL	58	60	0,500	
40/R K	35	ca. 40	Triangel roh	for pre-profiling
40/R L	45	ca. 40	Triangel roh	
40/R EL	58	ca. 40	Triangel roh	
60/R K	35	ca. 60	Triangel roh	for pre-profiling
60/R L	45	ca. 60	Triangel roh	
60/R EL	58	ca. 60	Triangel roh	